

# Where's My Home?



## Skill

- Classify plants and animals in different environments or habitats

## Student Grouping

- whole group
- small group
- center
- partners
- independent

## Materials

- chalkboard or whiteboard
- chalk or whiteboard markers
- Connect the pages of the scenes of each environment (ocean, desert, forest, and rain forest)
- Animal and Plant Cards from each environment (ocean, desert, forest, and rain forest)
- Answer Key

## Directions

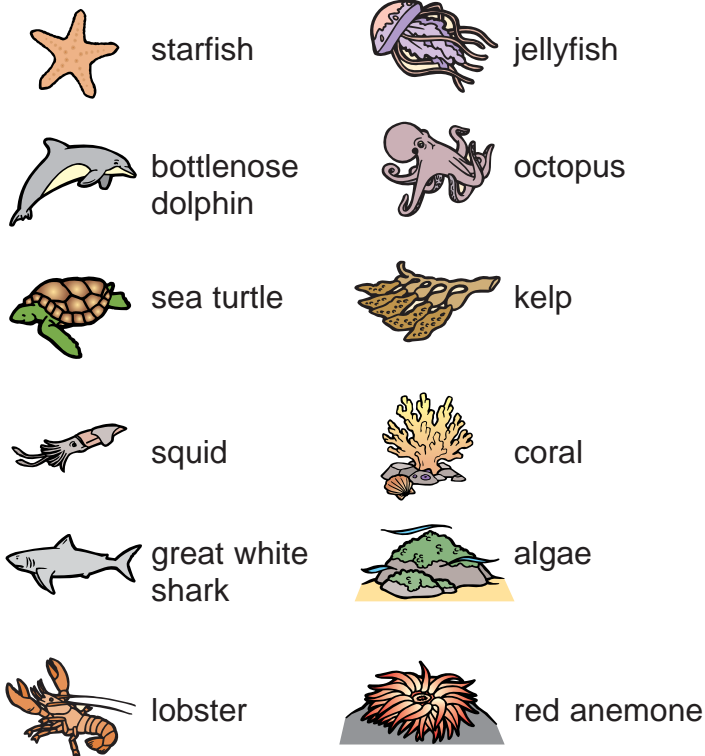
1. Write the words *ocean*, *desert*, *forest*, and *rain forest* on the board.
2. Explain each of the environments: ocean (a large body of salt water), desert (a dry place with lots of sunlight and very little rain), forest (a place where many trees grow) and rain forest (a place that is wet all year and has many trees).
3. Ask students to brainstorm any plants or animals they know that live in each environment.
4. Lay each habitat scene on the floor or post on a wall.
5. Mix up the animal and plant cards from the different habitats.
6. Tell students that today they will sort plants and animals into their correct habitats. Read the animal or plant name and the card fact, and then ask students to find the appropriate habitat. For example, "Jellyfish—I have an umbrella-shaped body and a stinger that can hurt humans. Where do you think the jellyfish lives? Ocean? Desert? Forest? Or a rain forest?" Place or post the jellyfish card on the ocean scene.
7. Give students the animal and plant cards to sort independently, with partners, as a small group, or sort as a whole class.
8. Check the Answer Key for answers.

## Ideas

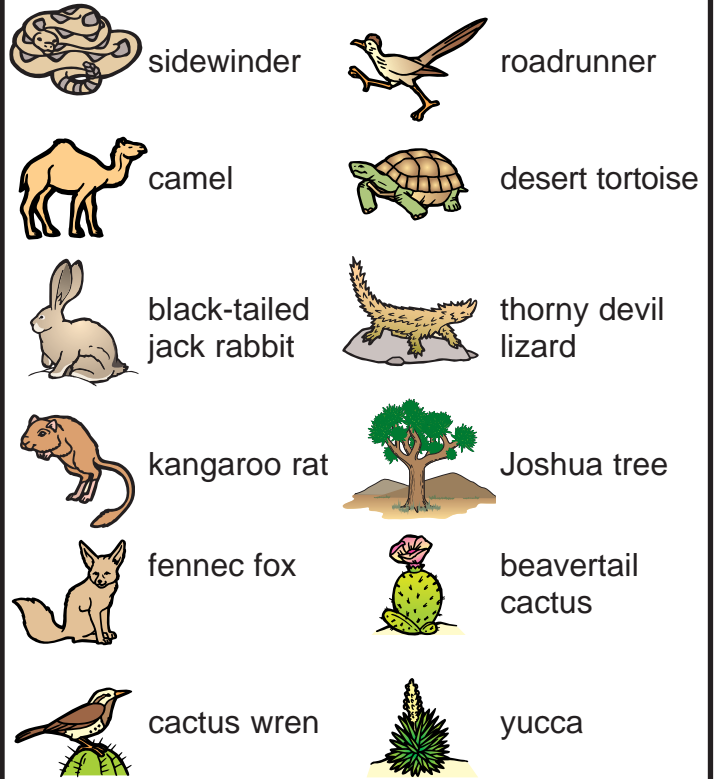
- Laminate the boards and cards for durability.
- Have students develop more cards of animals and plants that inhabit the same environment.
- Have students choose two animals or two plants from different environments and make comparisons. (Example: the fennec fox from the desert and the red fox from the forest)
- Make books for each environment. Have students create a page for each book that includes an animal or plant from that environment.
- Have students go through magazines and make collages for each habitat.
- Use the cards and scenes to develop decorative bulletin boards.

# Answer Key

## Ocean Animals and Plants



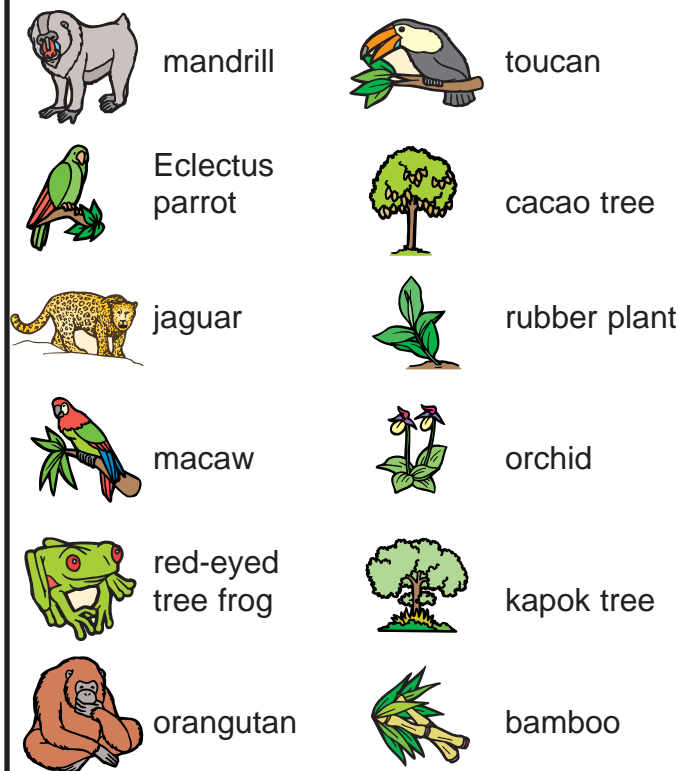
## Desert Animals and Plants



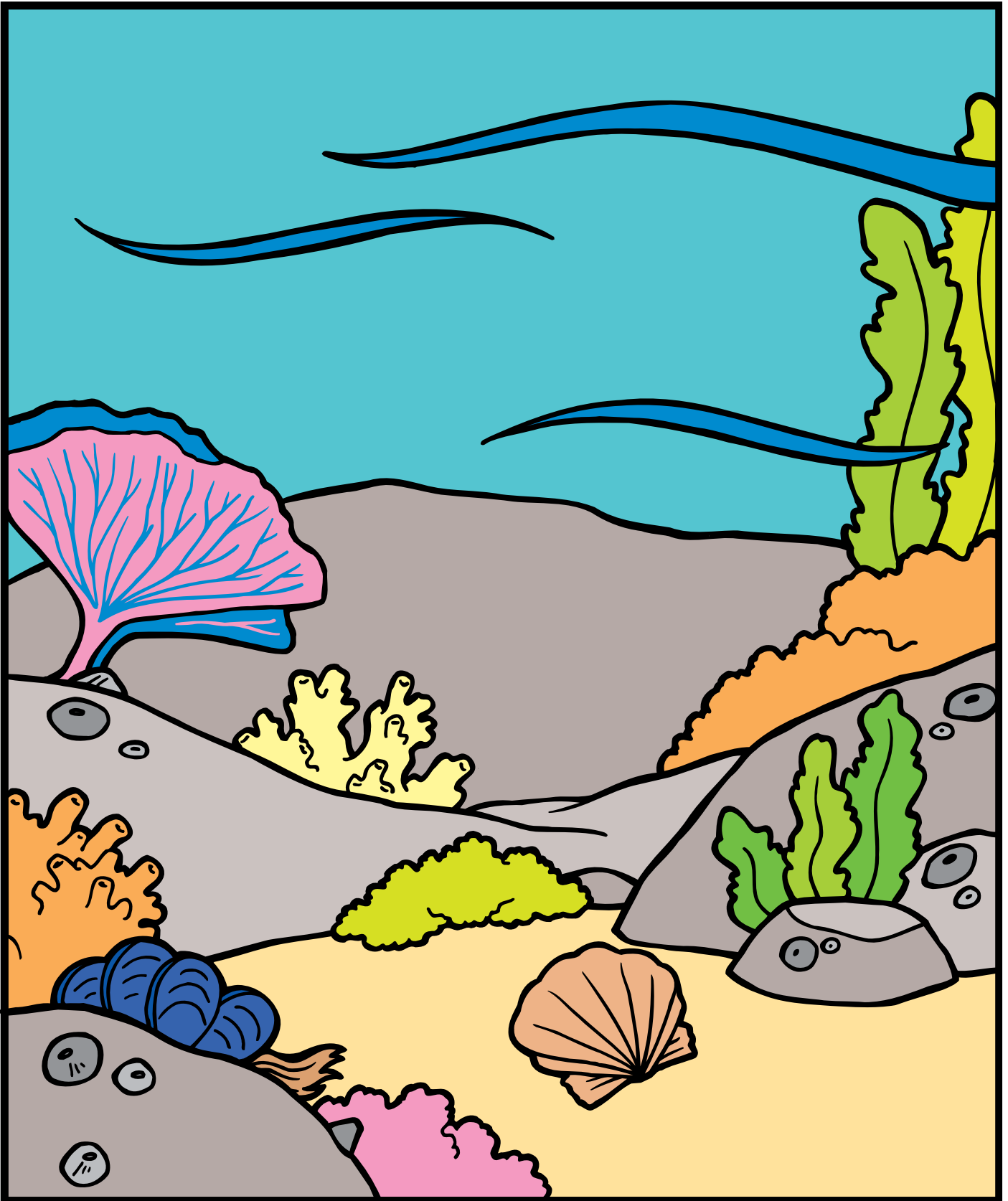
## Forest Animals and Plants



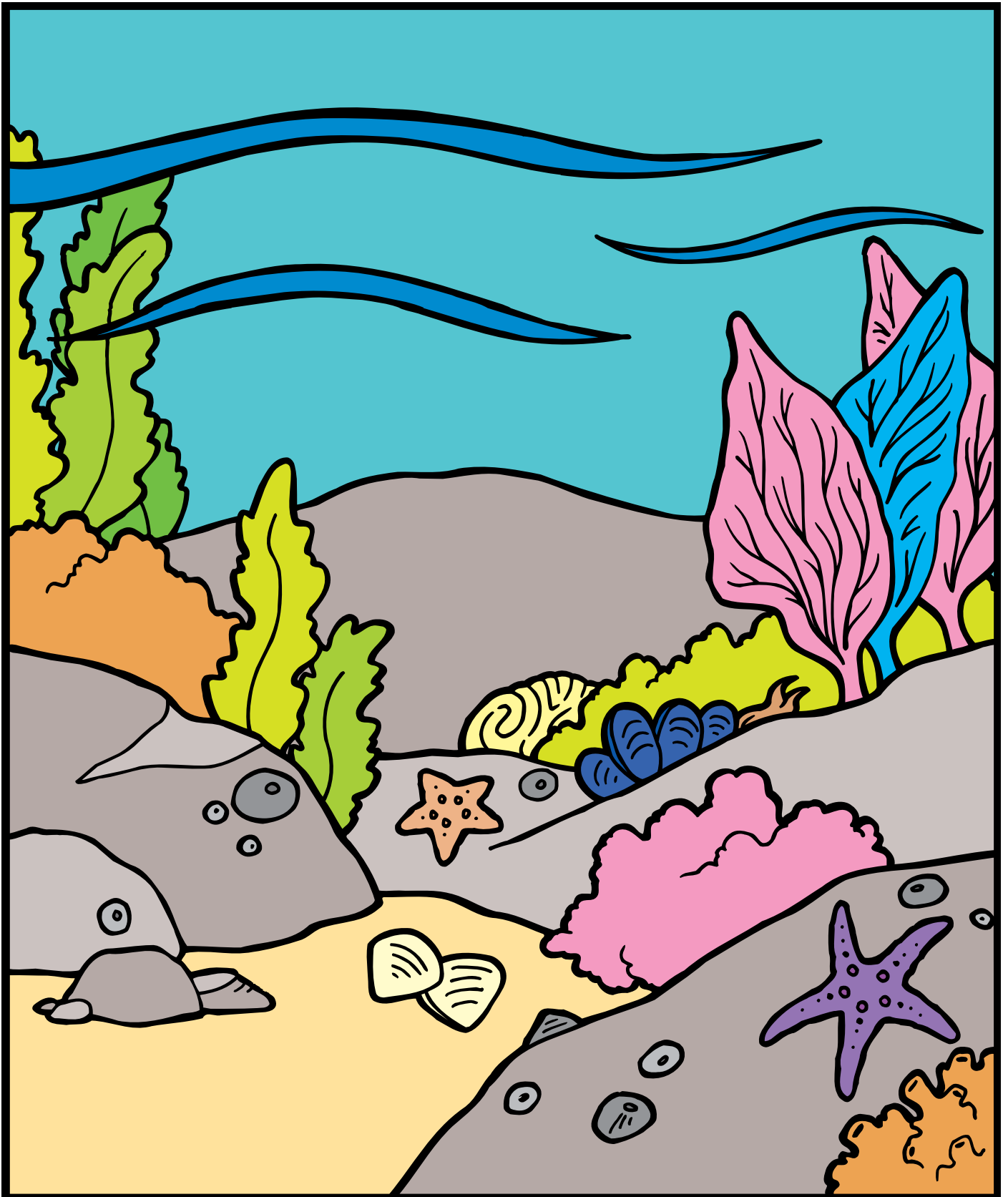
## Rain Forest Animals and Plants



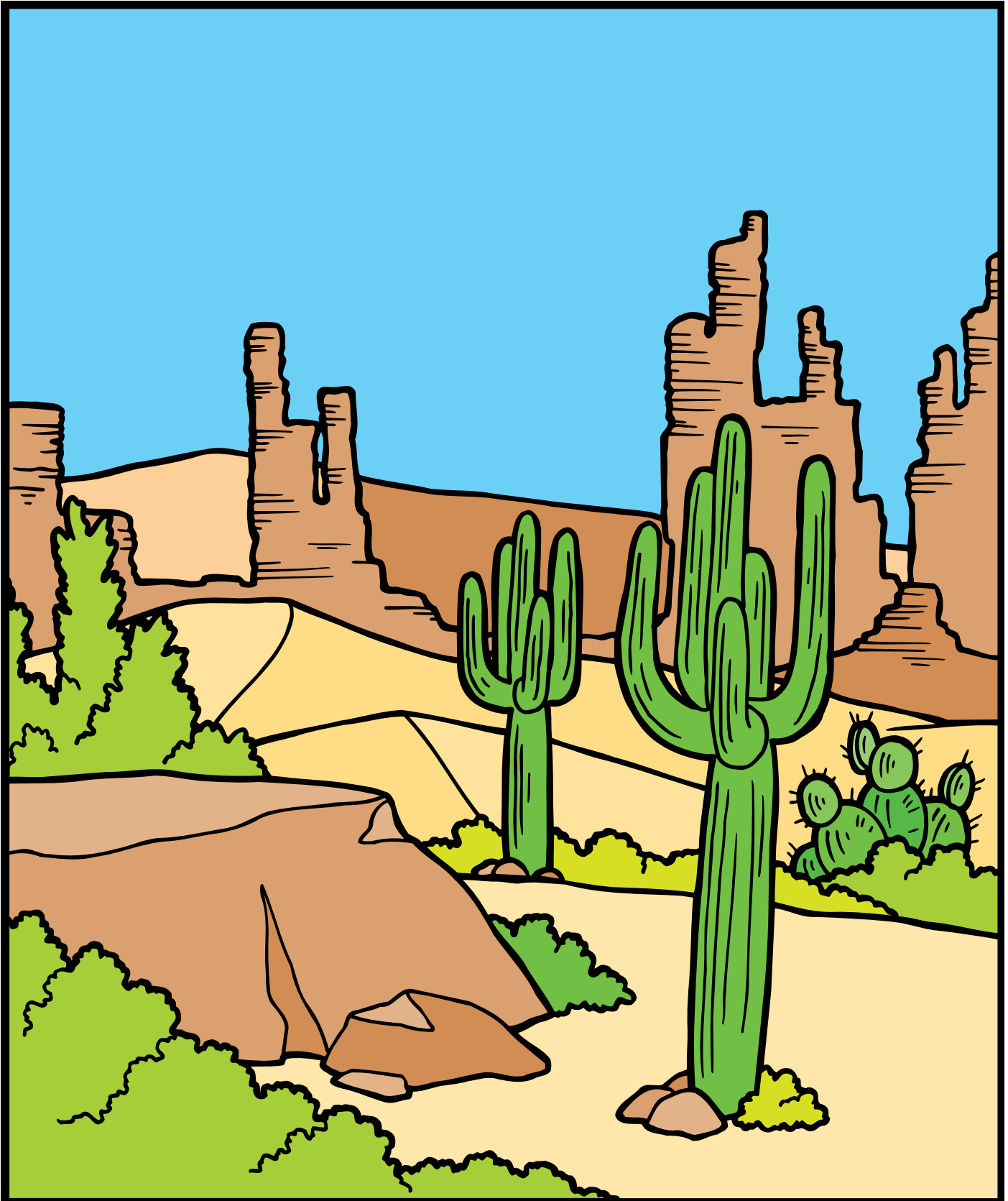
# Ocean



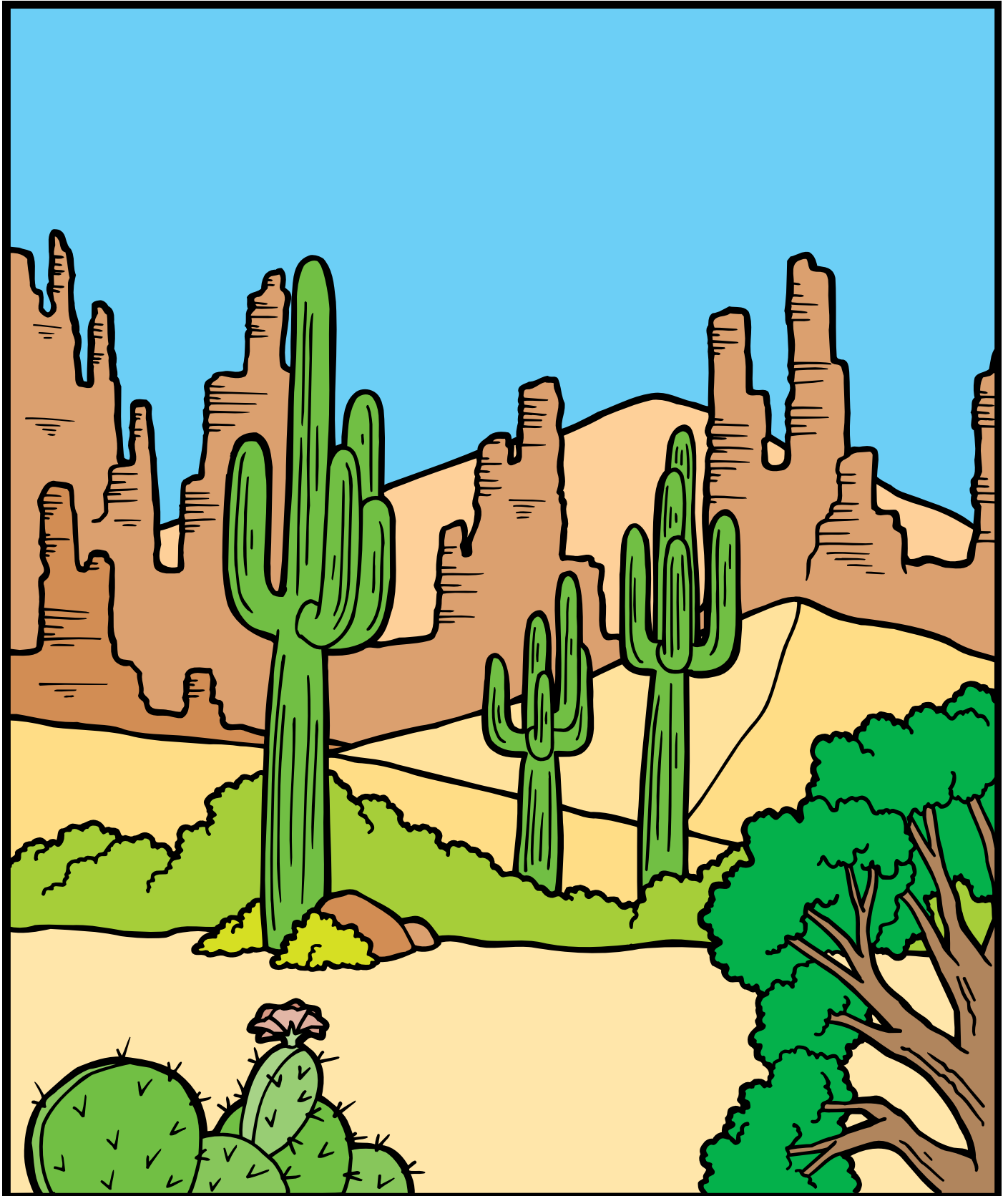
# Ocean



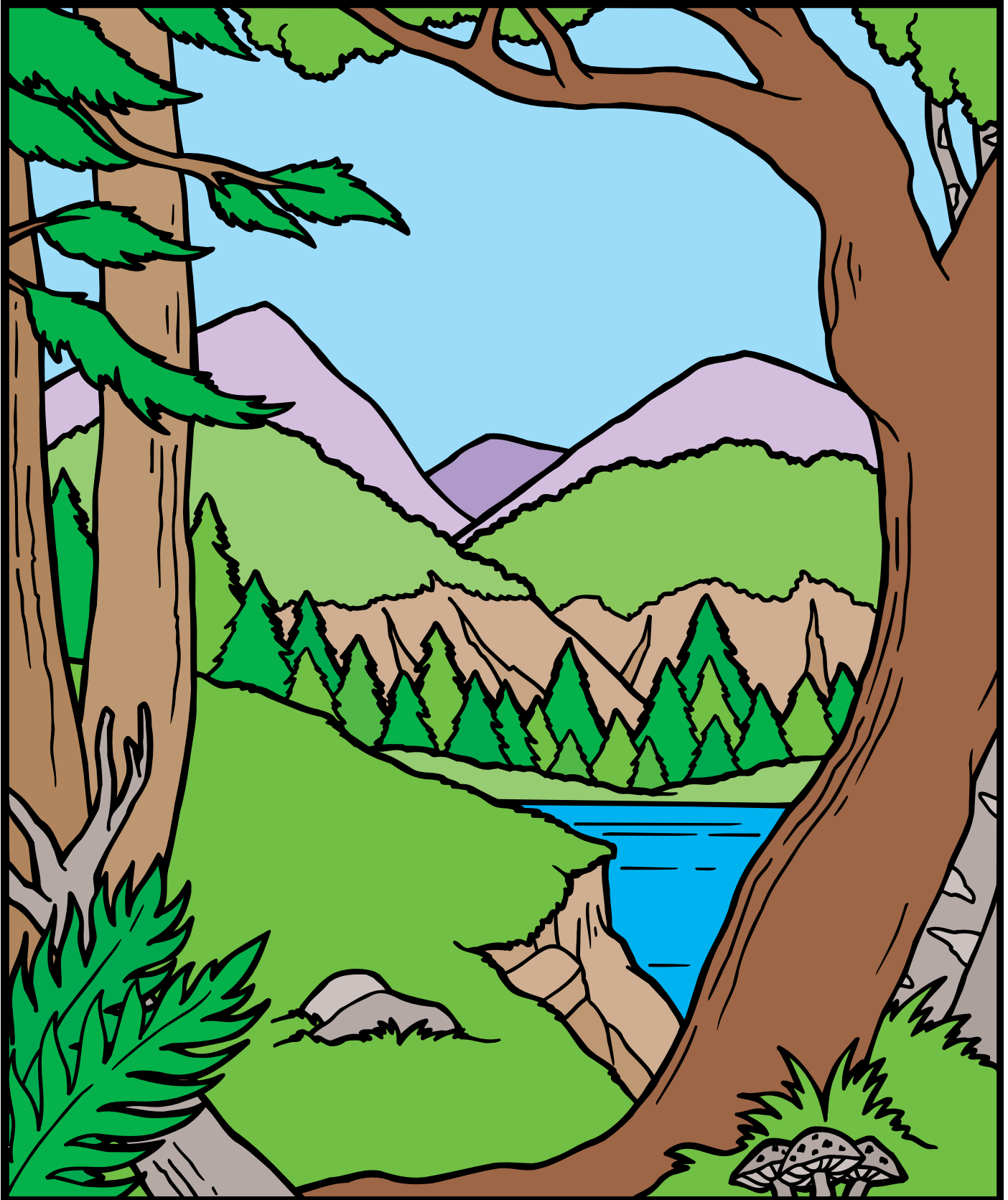
# Desert



# Desert

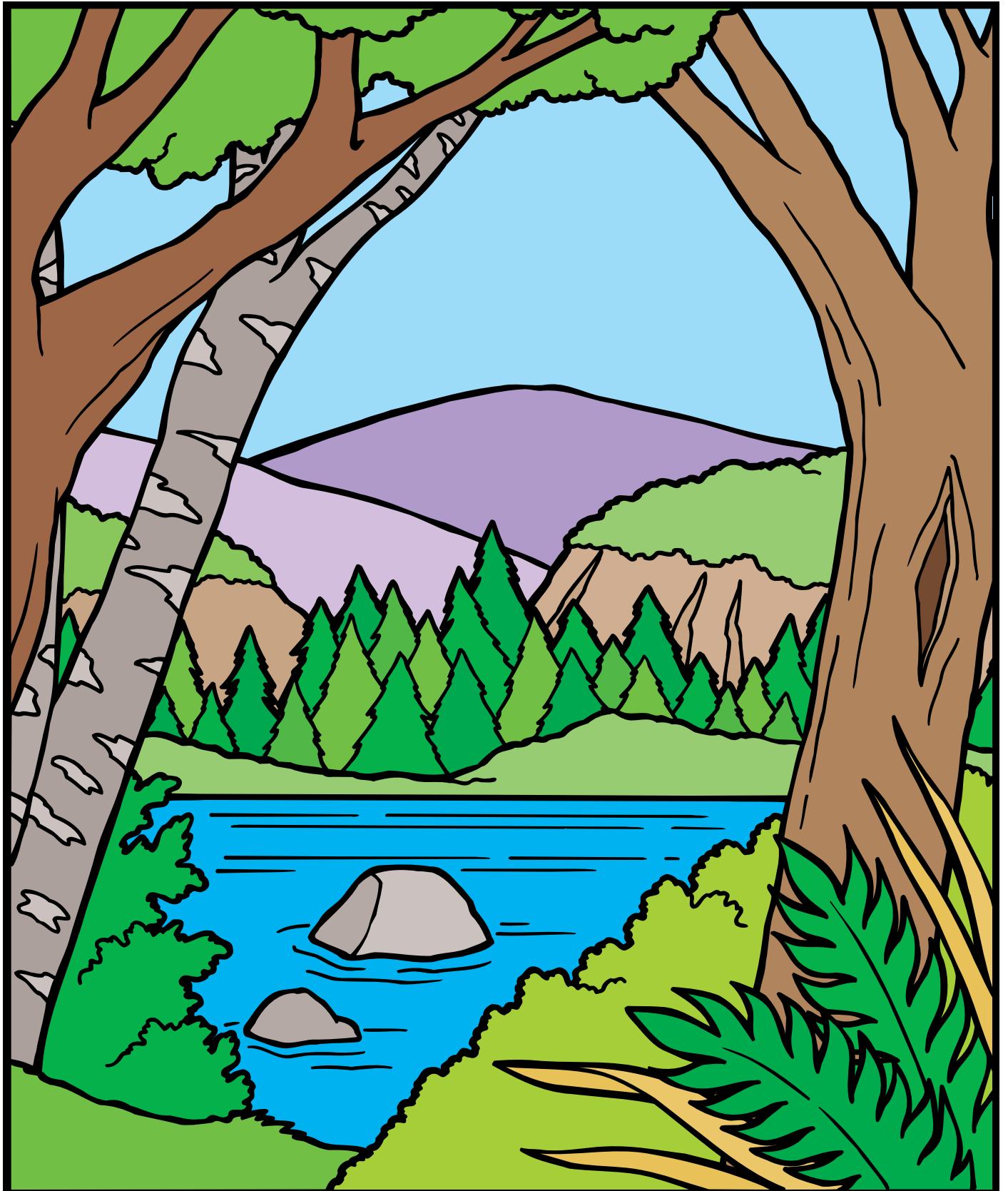


# Forest



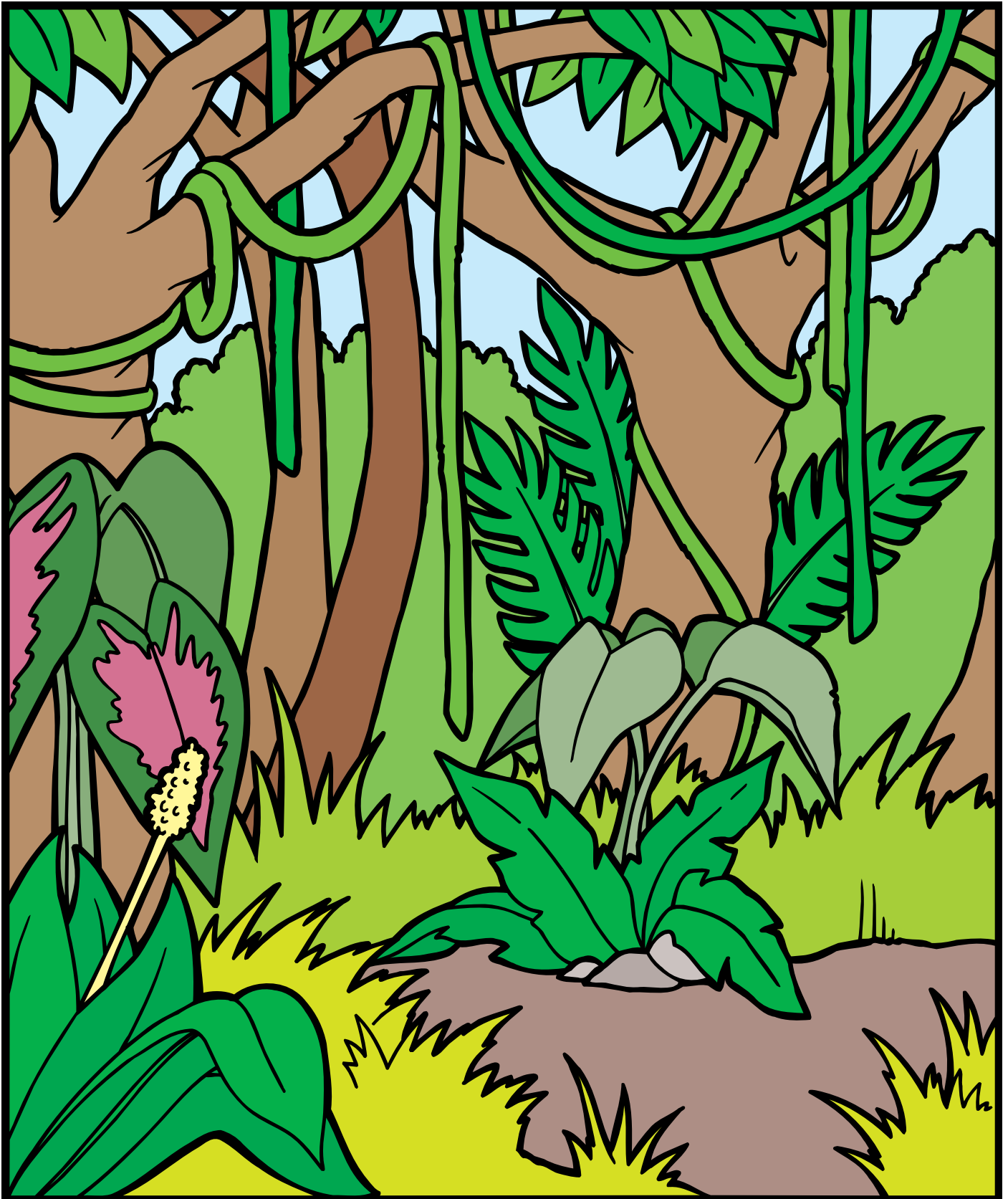


# Forest

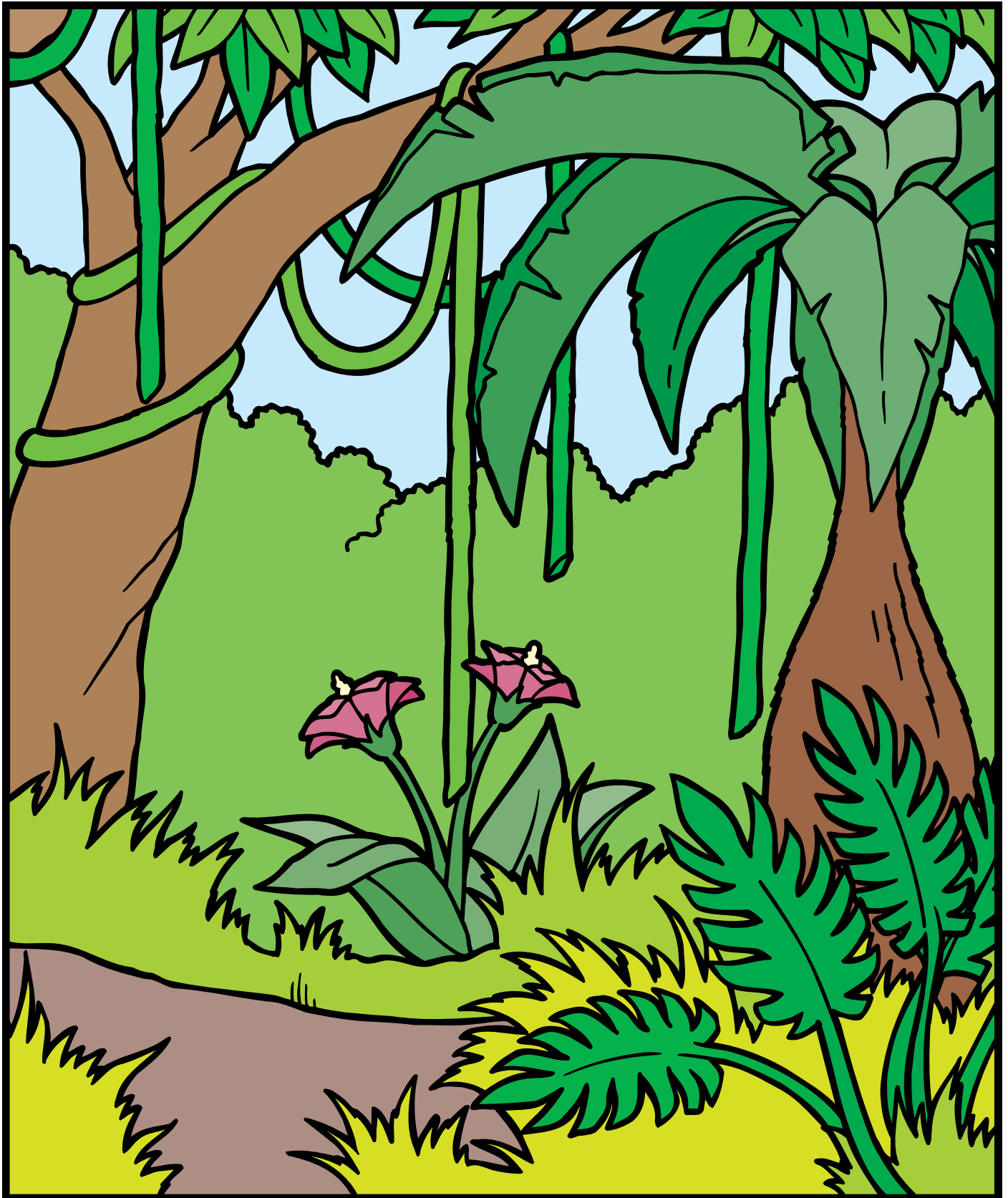




# Rain Forest



# Rain Forest



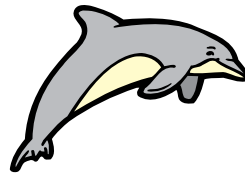
# Ocean Animals and Plants

starfish



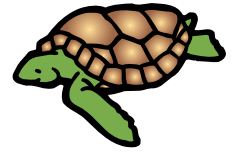
My shape helps me wrap myself around food.

bottlenose dolphin



My fins and tail help me swim fast to catch food.

sea turtle



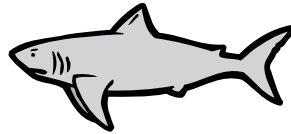
I have flippers that help me steer.

squid



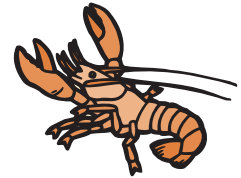
I squirt "ink" so I can get away from my enemy.

great white shark



I am the largest fish that hunts.

lobster



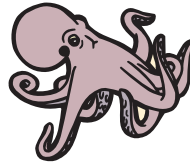
I have a hard shell and have eight walking legs.

jellyfish



I have an umbrella-shaped body and stingers that can hurt humans.

octopus



I have eight arms covered with suckers, and I eat shellfish.

kelp



I am a giant seaweed that grows in the cool waters.

coral



I am an animal that lives in big groups in a coral reef.

algae



We are small plants that live in water.

red anemone



My tentacles have stinging cells to help me catch food.

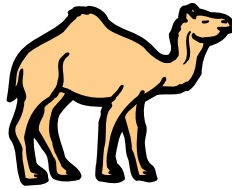
# Desert Animals and Plants

**sidewinder**



I move my body sideways in the hot sand.

**camel**



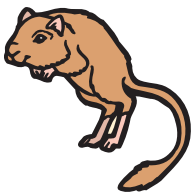
I can go a long time without water.

**black-tailed jack rabbit**



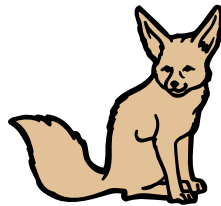
I have powerful back legs to help me jump away from enemies.

**kangaroo rat**



I store plant seeds deep in my burrow.

**fennec fox**



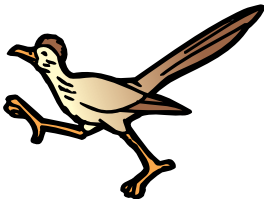
I have big ears to keep me cool.

**cactus wren**



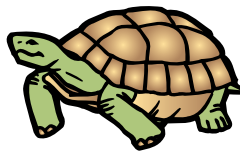
I make my nest on the cactus plant.

**roadrunner**



I run very fast to catch snakes and lizards.

**desert tortoise**



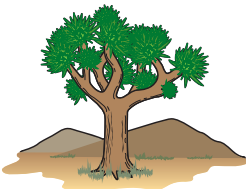
I live on land and have a domed shell.

**thorny devil lizard**



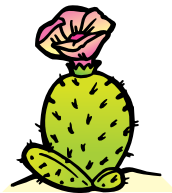
I can change colors so it is easier for me to hide.

**Joshua tree**



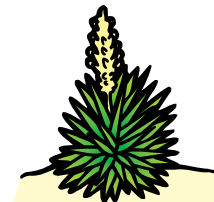
I have spiky leaves and have a fruit which is food for desert animals.

**beavertail cactus**



I have thorns to keep animals from eating me.

**yucca**



I have thick leaves to hold water.

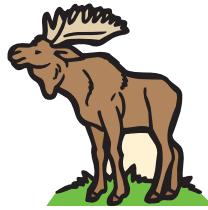
# Forest Animals and Plants

elk



I eat grass by using my sharp teeth.

moose



I am the largest of all living deer.

skunk



My terrible smell helps keep away intruders.

eastern chipmunk



I carry nuts in my mouth to store in my burrow for the winter.

black bear



I sleep through the winter and wake up in the spring to eat.

flying squirrel



I can glide in the air from tree to tree.

tawny owl



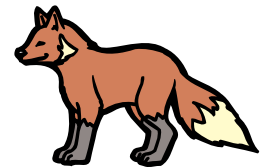
I hunt at night and make hooting sounds.

woodpecker



I have a strong beak for making holes in tree trunks for nests.

red fox



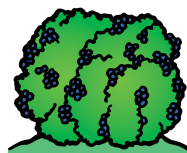
During the night I hunt for food, and I live in burrows.

mountain laurel



I am a small tree with white and purple flowers.

mountain berry bush



I need less sunlight than trees.

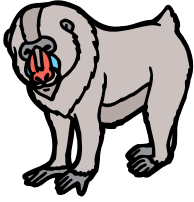
Scotch pine



My leaves are needles, and my bark is thick at my trunk.

# == Rain Forest Animals and Plants ==

**mandrill**



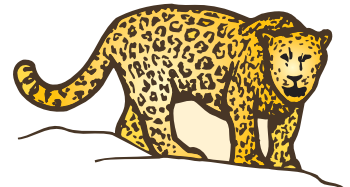
I am one of the largest of all monkeys.

**Eclectus parrot**



My colors help me hide from my enemy.

**jaguar**



I love to use my claws to fish in the water.

**macaw**



I live near the treetops, and my beak can open the hardest of fruits.

**red-eyed tree frog**



I am a frog with bright, red eyes.

**orangutan**



I live most of my life in the tops of trees.

**toucan**



I have a huge, colorful beak.

**cacao tree**



I grow beans used to make chocolate.

**rubber plant**



I am used to make things like rubber bands.

**orchid**



I grow from roots halfway up trees.

**kapok tree**



I am a very large tree and home for many animals.

**bamboo**



I am from the grass family and used to build many things.